

Essex County Beeline

The Newsletter of the Essex County Beekeepers' Association,
an Internationally Acclaimed Award-Winning Organization

Keeping Bees Since 1923

June 2008

The Essex County Beeline is published eleven times a year and is a benefit of membership in the ECBA.

Articles in this newsletter are copyrighted by the authors unless otherwise stated.

President (08-10):
Dave Meldrum
978-474-8700

Vice-president (08-10):
Larry Goldstein
978-887-8580

Recording Secretary (07-09):
Candy Leva
978-231-8409

Membership Secretary (08-10):
Linda Boylan
978-887-3917

Treasurer (07-09):
Jan Gaglione
978-535-1622

Directors (2008-10)
Peter Delaney **Dan Phillips**
978-887-5726 603-394-0130

Directors (2007-09)
Diane Sellars **Stan Sample**
781-862-1975 978-372-5672

Beeline Editor:
Candy Leva 781-231-8409
e-mail: Candice.leva@avnet.com

Essex County Beekeepers' Assoc.
P.O. Box 10
Topsfield, MA 01983-0010
Telephone: 978-887-6100

Website: essexcountybeekeepers.org

Monthly Meeting

June 8, 2008

Hive Opening 2:30PM
Meeting immediately following



Emery House
West Newburyport

Welcome Bee School Graduates!
Directions & Details on page 5

later than usual, because the Emery House grounds are in use earlier in the day. This should also be a fun meeting with lots of bee discussions with the graduating bee school class.

At the Board of Directors meeting we talked about making the smoker contest at the picnic more interesting. If the contestants use wood pellets, the smokers go too long and it doesn't take a lot of skill. One thought is "new rules". Each contestant only brings their empty smoker and a hive tool. The club provides the fuel (which will be kept a secret) along with a strip of newspaper and two kitchen matches. The contestants are given the fuel and matches only 5 minutes before the contest starts. That would put a little more fun into the game. Stay tuned.

Club Business

Presidents Message

I really enjoyed the May meeting. We had a lot of bee talks, including Bill Denhard's two queen hive technique and Stan Sample's talk about hives and follower boards that he made. We honored Chris & Pete Delaney for all their service to the club. We were outside in a great area with emus walking behind us and the weather held off until we were finished. It made for an interesting meeting. As a reminder the hive opening at June 8th meeting will start promptly at 2:30PM. This is a little

This is a great time of year for both us and the bees. Watching them build up so fast is amazing. The fruit trees are in bloom and I can smell the honey flow at the hive. So far the rain has been holding off from those week long storms that trap the bees in their hives for over a week. I always say bees are like teenagers, if you confine them to their room too long, they will think up some trouble.

I had a hive that was pretty weak coming out of winter. I tested it for Nosema by dissecting and grinding up the stomach (ventriculus) and examining it under a 400X power microscope. Randy Oliver has

published a lot articles about examining for Nosema in ABJ. Like Randy, I found that you have to test the older bees, because the younger bees always test negative. So I have been trapping older bees by taking only forager bees from hive entrance. You can see two accompanying photos (pg 4). One is Nosema at 400 power and the other is at 1,000 power. I found that staining them with a drop Methylene Blue helps to bring out the contrast under the microscope. This hive had a very bad case of Nosema, so I tried to treat it with Fumagilin, but the bees were reluctant to take their medication. Others are finding the same problem. Fortunately at the last minute, they started taking the Fumagilin, because I was getting anxious to put honey supers on and needed to stop feeding well before the supers go on. In the end the hive really rebounded and is just chock full of brood. Now I only have to convince the bees to go up into the supers.

Dave Meldrum

May Meeting

Bill Denhart did a presentation on a two queen hive. Why keep a 2 queen hive? – Could deliver up to 300 pounds of honey in optimal conditions. Draw back is the height of the hive, a step latter and strong back is required. It is most effective method to get a lot of honey. By introducing an additional queen with a hive separator between the two hives allowing both queens to build the colony population and brood from May to June. Late July combine the two colonies back into a to a 3 chamber hive. This creates a large population of bees with nothing to do but to make honey and maximize the honey flow season.

President Meldrum started the meeting @ 2:35PM and took a motion from the floor to accept the meeting minutes as printed in the May newsletter.

Treasurer’s report was read by Chris Delaney. Motion to approve the expenditure and play bill passed subject to audit was moved and accepted.

Chris Delaney was presented with the President’s Award by President Dave Meldrum. Peter Delaney was presented with a gift of a Nautical Clock in recognitions of his presidency by the members of ECBA.

Committee reports

Bee School: Larry Goldstein recapped the schools year in terms of the revenue and expenses. Recommendations are being considered for next year to improve the registration process. A resignation was received; Pete Delaney and Larry Goldstein will step in to help. Volunteers to fill the resignation must be done within 90 days in accordance to the by-laws. Some summer prep work is anticipated especially with pre-registration. Thank you to Larry and his committee for the great job they did this year.

Fair: Finished up the fair book changes, Candy is on order, wax order being placed this week and honey stix are in. Summer workshop starts Tuesday & Thursday after 7/4/08 and hope to do some touch up painting in the building too.

Library: Come get your name tags.

Queen rearing class: 30 people signed up, 20 people are on the waiting list. The date is 7/18 & 19

New business

Scholarship committee is looking for help on financial advice. i.e. evaluating and make investment recommendation to rebalance the portfolio. Contact Michele Bailey, Joe Donnelly or Stephanie Williams.

Co-op demo yesterday – Big question of the day “Where are all the bees going?” Good turn out.

Mass Bee Field Day: Anyone interested in going on June 21? Trying to get a group to travel to the event in South Deerfield~

Connie Condon. Announcement Fox new broadcasting their Mass Zip Trip from Essex on 5/23 Friday...Perhaps someone can be there to discuss ECBA.

Club would like an inventory of the observation hives used during the fair. Please advise Chris Delaney. They have accounted for 4, still looking for 2 more.

Phyllis & Parker Gifford were spotted out and about. Phyllis is progressing and going well. She said to say Hi to everyone.

Next meeting will be hive opening at the Emery House @ 2:30. Please note later start time.

Stan talked about equipment, follower boards, for comb honey. He created a simple dummy frame to replaces the needed follower board.

Motion to end the meeting was accepted @ 3:06PM.

Door Prize winner of a \$75 Brooksby Farm gift certificate was Mike King.

2008 Bee School Final Report



We have concluded a very successful year of Bee School with an unusually high turn-out due to the publicity from CCD in the news.

Numbers: The bee school generated [redacted] in total revenues which include tuition and extra book sales. The total expenses were [redacted]

which included 3 student refunds, mailings books and supplies. Expenses were kept to a minimum primarily due to making snacks for breaks versus buying. Net proceeds were [REDACTED]

There were a total of 76 paying students, a total of 104 attendees and 87 graduates from the class of 2008. We estimated that we turned away about 30/40 people the first night due to over subscription. This will be discussed below.

Recommendation: The bee school committee held a wrap up meeting and reviewed the evaluations submitted by the students. Below is a short list of recommendations:

1. Due to the over subscription consider pre-registration for next year's class. This would have to be included in the Fair literature as well as the registration forms. We should try for 60 paying students and not more than 100 people. There will be some attrition to bring the total number down below 90, which is a manageable number.
2. Continue to bring in new speakers for teaching sessions.
3. Continue to invite the students to the bee school monthly meeting in June/Hive opening.
4. Consider working out an arrangement with the local suppliers to reserve a minimum number of bee-packages for students. This action will reduce the pressure to order early before students have made their decision.
5. Consider a new arrangement with the local suppliers to include donations as a quid pro quo for generating business. The donations should include frames and wax. In addition consideration should be given for the suppliers to set up and display their wares so students can get a better appreciation of their business during supplier night(s) that could extend over a couple of weeks vs. one week.
6. Follow the Standard Operation Procedure as outlined.

7. We recommend that during the year-end budget review at the BOD meeting, the net proceeds from the Bee School be allocated to the Scholarship Fund.

8. Review, clean-up and inventory the bee school supplies in the building attic before ordering supplies.

I would like to thank so many people for contributing their time and effort to the school.

Thanks to the core committee of Brian Glass, Will Graves, Chris Meehan and Becky Reeves. Thanks to the club members who attended and assisted and to those who hosted hive openings. A special thanks to Dave Meldrum for his great support and effort. And of course thanks to Brian Glass for his GREAT cookies every week.

Instructors:

Dave Meldrum, Bill Bleem, Eric Josephson, Janet Platt, Kate Jurczyk, Chris Delaney, Peter Delaney, Vin Gaglione, Chris Sample, Kathy Sample, Christine Lewis, Bill Denhard, Rick Reault, Ben Chadwick Randy Johnson, Brian Glass

Submitted by
Larry Goldstein
May 15, 2008



Bee Demonstrations

Lowell Spinners

June 30th, 7:00 PM

July 22nd, 7:00 PM

August 16th, 5:00 PM

Volunteers need to be at the field one hour before game time. Contact Chris Delaney for details.

The Spinners generously donate \$100 toward ECBA Scholarships.

BOD Q2 Meeting Minutes

May 12, 2008

In attendance: Dave Meldrum, Linda Boylan, Jan Gaglione, Larry Goldstein, Stan Sample, Diane Sellars, Dan Phillips, Candy Leva

Committee Reports

Scholarship: Michelle Bailey reported that 4 applications were received and they will continue to accept through 5/15/08. Awards come from interest only and any donations earmarked for scholarship. Scholarships are awarded based on the following point score criteria: Club membership (10), Friend of club member (5), Personal Service to club (20), Family service to club (10), Bee-related course of study (20), Grades (10), Financial need (10), Recommendation received (10), Previous award recipient (-10). Applicants are then prioritized; First to members, second to children of members, natural or adopted; third to grandchildren, natural or adopted; fourth to such other deserving students making application and the scholarship committee finding worthy.

The committee thought it may be time to reevaluate the scholarship funds and noted there are organizations that manage them. At the next meeting the committee would ask if any member(s) have experience and would be interested in assisting the committee in managing the investments.

Old Business

Insurance update... Dave M is now trying to obtain info on insuring the

BOD on ECBA premium insurance with Farmers as an insurance rider. Stan checked with his union and suggested we shop around.

Backing up club computer data Files can be uploaded, password protected through FTP files at no expense through our website. Dave will collect names, set up accounts and arrange 10 minute training.

Fair Building: Looking for Chairman to head it up. Stan agreed to make phone calls to get a group together.

Bee School: Final wrap up. The new chairman resigned. Stan Sample pointed out the by-laws states what has to be done to replace him. The by-laws will be reviewed the board will look for nominations.

New Business

Building committee: Stan to arrange a meeting in June

Future meetings details, locations, raffles were discussed.

June 8th, Bee School students are invited.

July Picnic is run by BOD: Silent Auction items with minimum bids.

Smoker Contest – new rules

Raffle items, AM Golf

Softball – About noon

Food – 2:30

August Meeting suggestions: Jewel Winery or Neshoba Valley Winery, Canterbury, Garden in the woods – Framingham, Newburyport perennial garden. Anne Averill of Department Plant, Soil, Insects Science of University of Massachusetts, Amherst is available to speak on bumble bees at no cost perhaps in August.

September - Looking for venue

Next BOD August 4th

Larry Goldstein will run the meeting.

Queens gift certificates are still available, 4 Russian, 4 Italians for anyone interested in displaying an Observation hive at the fair.

Meeting adjourned @ 8:43PM.

Newsletter Deadline

The deadline for getting information into the next newsletter will be **June 14, 2008**. Please make submissions to Candy Leva by email at: Candice.leva@avnet.com

Calendar

June 8, 2008

Member Meeting
Emery House, Newburyport

June 13, 2008

Newsletter Deadline

June 21, 2008

Mass Bee Field Day

July 18-19, 2008

Queen Rearing Class

Tues & Thu in July

Summer workshop

July 18-19, 2008

Queen Rearing Class

August 4, 2008

BOD Meeting

Auction Items Wanted

It has become an ECBA custom to hold a silent auction during the July Picnic. We ask each of you to graciously donate an item. All proceeds benefit the ECBA Scholarship Fund. No item is too big or small. Bring your item to the picnic and note a minimum starting bid.



Coming in July ECBA Picnic/Cookout

The day features golfing in the AM with pre-registration, softball for all ages at noon, silent auction, raffle table, smoker contest, and a supper door prize. ECBA Scholarship winners will be announced.

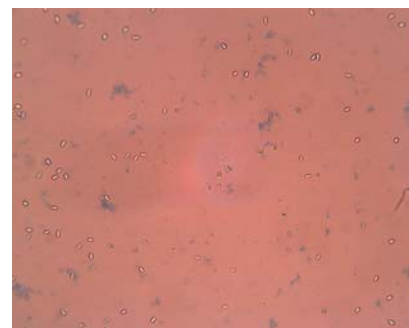
Members will be asked to bring salads and desserts, which will be assigned by the first letter of your last name. More details will follow in next month's newsletter.

Good food, good fun, good company~

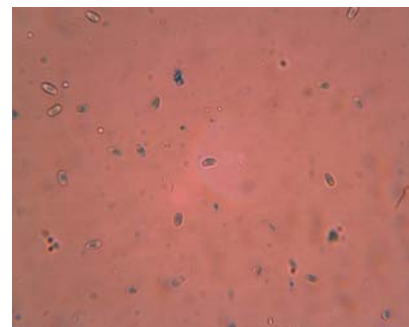
Hope to see you ALL there!

Did you know...

ECBA members receive discount subscriptions to bee magazines? Yes they do, please the club librarian at the next meeting for details.



"Nosema at 400X"



"Nosema at 1,000X"

JUNE MONTHLY MEETING

SUNDAY, June 8, 2008
Emery House
21 Emery Lane
West Newbury, MA 01985
978.462.7940



Directions below

Hive opening at 2:30 by
Senior Brother James Koester
Member meeting
Immediately following

Bring a Raffle Table item!
Door Prize!

Bring your lawn chairs and snacks!

Emery House is a 144-acre parcel on the border of West Newbury and Newburyport. It is a retreat center operated by the Society of St. John the Evangelist, a monastic order of the Episcopal Church. There are 11 buildings on the property, ranging from a 15-room main house begun in 1720, to two small 10x10 cabins in the forest used by retreatants in the summer.

Directions to Emery House

Driving from points north

From I-495 NORTH take Exit 55, Route 110 EAST (Salisbury-Boston/I-95 SOUTH). Route 110 leads to I-95 SOUTH. From I-95 SOUTH take Exit 57 (Newburyport-West Newbury/Route 113). Turn right at the end of the ramp, taking Route 113 WEST for about one mile. Emery House is marked with a sign that reads "Emery House" on the right (north) side of the road. Turn right, up the hill and take the lane to the main house (yellow farmhouse with dark green shutters) on the right about 1,000 feet down the road.

Massachusetts Beekeepers' Association 2008 Field Day

When: Saturday, June 21, 2008 from 9:30 to 3:00. Registration starts at 9:00.

What: Live demonstrations on hive inspections, installing swarms, mite evaluations, queen marking and handling, feeding bees, observation hives, pollen collecting, mead making, and more. Come see and learn from your fellow local and regional beekeepers. Also, UMass Extension staff on their current research projects. This event is open to all beekeepers; you do not need to be a member of MassBee to attend. This is a rain or shine event. Cancellations due to severe weather will be posted on www.massbee.org by June 19. Consider carpooling with friends from your local bee association. **Bring your veil or bee suit.**

What Else: Smoker contest and frame nailing contest with prizes. Bring your smoker/fuel to compete. Nuc raffles, Mass Bee gear and Bee Plant sale. The Barts Ice Cream Truck will be there mid-day (*Not included in your lunch reservation*).

What's cooking: Holy Smokes will be providing BBQ boxed lunches. Choice of Pulled pork or smoked Turkey salad sandwich (Turkey salad has cranberries and onions). Each lunch includes: cole slaw and chefs beans (baked beans with smoked bacon and onions) and a beverage.

Lunch reservations must be reserved in advance by Saturday, June 14.

Where: Umass Agronomy Research Barn, South Deerfield, MA.

Directions: From I-91 north take exit 24; turn right at end of ramp onto Rts 5 & 10 North. From I-91 south, take exit 24 and turn left at the end of the ramp onto Rts 5 & 10 North. Go north on 5 & 10 a few hundred yards to the traffic light and turn right onto Rt. 116 (toward Amherst). Proceed about one mile through another light and turn left (north) onto River Rd. just before the bridge over the Connecticut River. Go north on River Rd. past a housing development and left through the gate onto the Research Farm. Look for signs.

Lodging: Red Roof Inn, S. Deerfield. Call 413-665-7161 for reservations and rates. White Birch Campground, Whately. Call 413-665-4941 or www.philipprice.com/whitebirchcamp/contact.html

Please help us plan accordingly and pre-register whether you are reserving lunch or not. Thank you!

Name(s): _____

Street: _____

City, State, Zip: _____

Phone #: _____ Email: _____

attending _____ No Lunch _____ \$10 for BBQ boxed lunch (Advance Registration required)

Lunch choice: _____ BBQ pulled pork _____ Turkey salad sandwich

Mail with payment to: MBA c/o Andrea Desilets, 16 Pond St. #3, Ayer, MA 01432

****Please make checks payable to MBA****



Bee Involved With Your Club

Thinking about getting more involved with Essex County Beekeeper Association? Consider running for a club office. Over the next few newsletters we will feature the club offices available, their duties/tasks and length of terms.

The principal officers of Essex County Beekeeping Association are a president, a vice-president, a recording secretary/clerk, a financial/membership secretary, a treasurer, and four directors. Election of recording secretary/clerk, treasurer and two directors shall be held in even-numbered years and the election of president, vice-president, financial/membership secretary and two directors shall be held in odd-numbered years. Elections are held in November and terms for all officers and directors are held for two years.

Up for election November 2008 are the following positions:

Recording Secretary, Treasurer and Two **Directors**

This month we will highlight:

Directors

The Directors represent ECBA before other organizations, i.e. Mass Bee, and report to the membership activities of those organizations. Directors attend the quarterly Board of Directors meeting held in the months of February, May, August and November. Each director has one vote and majority vote of the directors present at a meeting shall determine and govern.

Current Directors whose term expires January 2009 are Stan Sample and Diane Sellars. If you have any questions regarding a Directors position email Stan at samplebee@gmail.com or Diane at dmsellars@hotmail.com or strike up a conversation with them during the June meeting.





ESSEX COUNTY BEEKEEPERS' ASSOCIATION, INC.
P.O. BOX 10
TOPSFIELD, MA 01983-0010

June 2008



What's in this month's issue?

President's Message	1-2
May Meeting Report	2
Bee School Final Report	2-3
Treasurers Report	3
Future Bee Demo's	3
BOD Q2 Minutes	3-4
Calendar	4
June Meeting Details	5
Mass Bee Field Day Details	6
ECBA Job Description	7